



# McAfee Endpoint Protection for SMB

**You grow your business. We keep it secure.**

## Key Advantages

- Intuitive security lets you rely on McAfee expertise, so you can focus on your business.
- Simplified management—on your terms—from the cloud or on premises.
- Comprehensive protection against cyberthreats with McAfee Global Threat Intelligence.
- Affordable security with 24/7 access to support just a phone call away.



Smart



Simple



Secure

With the Internet and connected devices now an integral part of your business, your employees' digital lives and your business are constantly at risk of a cyberattack. Your time is valuable, and your security shouldn't slow you down. Whether you own a media agency, a restaurant, a law firm, or any other type of small to medium-sized business (SMB), protecting your endpoints should be simple and affordable—without the need for IT expertise. McAfee® Endpoint Protection for SMB provides superior protection for your business. Recognized by Gartner as a leader in endpoint security and mobile data protection, McAfee offers a superior solution that is Smart, Simple, and Secure.

McAfee Endpoint Protection for SMB offers cost-effective security that's easy to use and delivers immediate, up-to-the-minute protection from dangerous threats, like viruses, worms, Trojans, targeted attacks, spyware, drive-by-downloads, and more. For more than 25 years, McAfee has provided SMBs with industry-leading security solutions for desktops, laptops, servers, email, and the web.

McAfee Endpoint Protection for SMB combines award-winning McAfee threat protection technologies, along with web and messaging security and data protection—to secure your internal IT infrastructure. In addition, it provides rigorous mobile security and mobile device management that provides controlled access to your corporate network.

Backed by McAfee Global Threat Intelligence (McAfee GTI), you get real-time protection. McAfee GTI provides the most comprehensive threat intelligence in the market. Powered by a worldwide network of threat sensors and a global, dedicated research team, McAfee GTI

gives users visibility across all threat vectors—file, web, message, and network—and a view into the latest vulnerabilities. Rely on security expertise from McAfee, so you can stay focused on your business.

## Smart Performance

- **High performance with streamlined design**—Your endpoint security client comes with integrated modules that work in tandem to protect your systems from a wide range of security threats.
- **Minimized desktop footprint**—The solution's optimized architecture provides a light and lean footprint that uses minimal disk space and improves system boot time.
- **Zero-impact user scanning**—Resource-based smart scanning only performs scans when the device is not in use and resumes after shutdown or restart to ensure employee productivity is not impacted.

**McAfee Sets Industry Standards:**

- Recognized by Gartner as a leader in endpoint security and mobile data protection.
- First to manage a broad range of security products, including endpoint, network, data, web, and email security with a single console.
- First to deliver a single agent and single console for managing endpoint security.
- First product to have a unified management platform for endpoint security and compliance management.
- First to manage both McAfee and third-party security products.
- First to combine endpoint security and data protection in one truly integrated suite.

**Simple Solution**

- **Enjoy flexible security on your terms—** Manage your business security the way you want by deploying in the cloud or on premises using your own server. And, with the solution's single management console, you gain strong control over your business security by defining policies, generating compliance reports, and adding or removing devices.
- **Simple installation saves time and setup costs—** Spend less time managing security and more time on your core business activities with a simple installation that lets you get up and running in four clicks and less than 20 minutes.

**Powerful Protection**

- **Always-on, real-time malware protection—** McAfee GTI gives you the most comprehensive, real-time protection against cyberthreats.
- **Gain control of mobile security-related challenges—** With mobile device management you can control the influx of mobile devices that access company information and protect your business from data loss and threats that target mobile devices.
- **Reduce email spam—** Optimize your network bandwidth and protect against phishing threats and other malicious emails. Using industry-leading content security, your incoming and outgoing emails are protected against malicious email threats and the risk of data loss.

	McAfee Endpoint Protection Essential for SMB		McAfee Endpoint Protection Advanced for SMB	
	On Premises	Cloud	On Premises	Cloud
<b>Threat Protection</b>				
Protects desktops, laptops, and servers from viruses and malware.	✓	✓	✓	✓
Protects Microsoft Windows and Mac.	✓		✓	
Restricts access and limits potential outbreak damage.	✓	✓	✓	✓
Overcomes exploits from latest attacks against vulnerabilities.	✓	✓	✓	✓
Desktop firewall ensures that only legitimate network traffic is allowed.	✓	✓	✓	✓
<b>Web and Messaging Security</b>				
Reduces spam and phishing attacks.			✓	
Reduces web-related threats with strong control and guided web usage.	✓	✓	✓	✓
<b>Mobile Security</b>				
Provides visibility, control, and compliance against an influx of mobile devices.			✓	
Protects Google Android devices.			✓	
<b>Data Protection</b>				
Prevents data leakage with the restriction of unauthorized access of removable devices.	✓		✓	
Encrypts critical business information on your devices.			✓	
<b>Management</b>				
Deployed and managed using your own server.	✓		✓	
Deployed and managed using the cloud.		✓		✓
Powered by McAfee GTI.	✓	✓	✓	✓

Table 1. Features and Deployment Options

**System Requirements**

- **Client computers:**  
Windows, Mac
- **Servers:** Windows-based
- **Mobile devices:** Android

For details, please visit the product page on [www.mcafee.com/endpoint-smb-en](http://www.mcafee.com/endpoint-smb-en).

**Free 30-Day Trial**

Experience the value of McAfee cloud-based security solutions with a free 30-day trial. Visit [www.mcafee.com/endpoint-smb-en](http://www.mcafee.com/endpoint-smb-en).

**Learn More**

Call us at 888.847.8766, 24 hours a day, seven days a week.

**McAfee Solution Services Partners:**

McAfee partners offer professional services that range from installation to management. Contact McAfee today to learn how **McAfee Partner Portal** can help you.

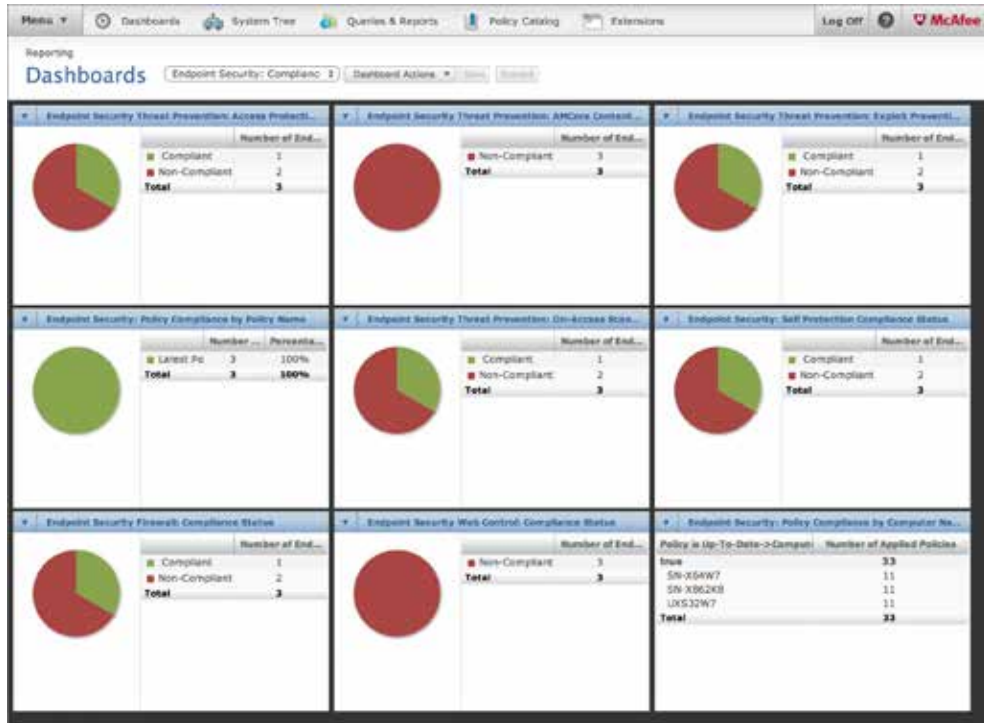


Figure 1. Manage your business security using a simple dashboard on premises or in the cloud.

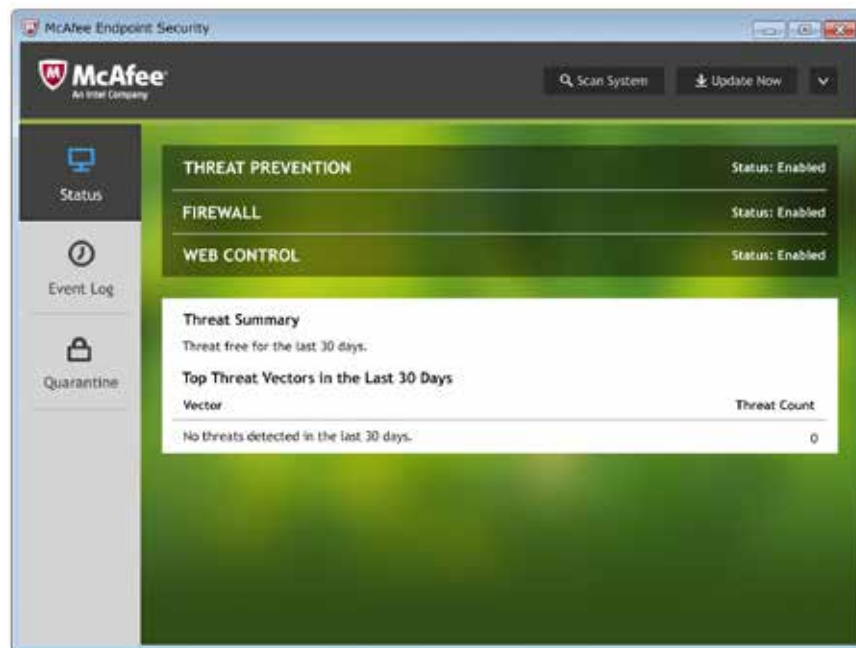


Figure 2. Get superior protection with easy-to-use, next-generation endpoint security.

